



Maruti Ertiga Brochure

ERTIGA
a feeling called LUV

Live life with

LUV



MARUTI SUZUKI
Way of Life!

Dealer Stamp

MARUTI SUZUKI INDIA LIMITED
Plot No.1, Nelson Mandela Road, Vasant Kunj, New Delhi-110 070, India.

MARUTI SUZUKI
Way of Life!

LUV is warmth LUV is excitement LUV is a feeling that changes your life

LUV is a Life Utility Vehicle that transforms you

The all new Ertiga is here to enhance your lifestyle. A powerful, responsive engine. Advanced technology for better performance. Ergonomically designed 5+2 flexi-seating. Stylish, happy interiors with high quality upholstery. All come together in a sporty body design to create a new car-category. From rush-hour driving to midnight spins and long drives, LUV is here to transform it all!





<p>STYLISH CLUSTER LAMPS For sharpness and elegance.</p>	<p>AERODYNAMIC STYLING Promotes fuel efficiency & windnoise reduction.</p>
	
<p>SMART SIDE VIEW MIRRORS Reduces wind noise. Integrated indicators augment safety.</p>	<p>IN-BUILT FOG LAMPS Lends ease in tough driving conditions.</p>
	
<p>CLASSY TAIL LIGHTS Lends charm to the body design.</p>	<p>ALLOY WHEELS For that edgy, sporty look.</p>
	

LUV at first sight

One look is all it takes. The design of the Ertiga blends stylish, bold looks with flowing, aerodynamic lines. Each detail of the exterior has been refined to lend it flair, performance and character befitting a category creator.



LUV is beautiful inside

If it doesn't keep you warm and make you smile, it isn't LUV. Open the door of the Ertiga and step into a world where elegance meets comfort, a space that is designed to optimise the convenience of the driver and passengers. A myriad of features that blend style and comfort come together to create an interior that suits the pioneer of a new car category. Step in and start discovering LUV!



Stylish meter cluster with LCD display



High-quality textured, premium upholstery

■ Sporty dashboard

A stylish dashboard, done up in contrasting brown & beige, fitted with user-friendly features.

■ In-built music system

Advanced music system with volume control that adjusts itself according to the speed of the car, in-line with the volume pre-set by the user, 4+2 speakers and an LCD screen.

■ Chrome door handles & silver trims

For an added touch of class to the interiors.

■ 2nd row AC with controls

Separate air-conditioning in the rear-cabin, with three easy settings, ensures that even the 3rd row gets great cooling.



2nd row arm-rest for comfort



Front and rear door pockets



Tweeter for an enhanced audio experience



Stylish steering with integrated audio control


Everyone's in LUV

The 5+2 Flexi-Seating

Designed to carry 7 people in a 3-row layout, the Ertiga ensures no one is left behind. The smart design of the Ertiga enables the creation of a cabin which offers comfort and space to every passenger. The first-of-its-kind vehicle, with a long wheelbase, high headroom and careful positioning of the seating, provides ample space in every row.

The versatility provided by different passenger and luggage combinations possible makes the Ertiga ideal for everything from a shopping spree at the mart to a family road trip.





FRONT SEATS

- 6-way adjustable, ergonomically designed driver's seat
- Tilt-steering
- Electronically adjustable ORVMs
- Ensured driving comfort and pleasure through city traffic as well as long distances

2ND ROW SEATS

- Centre armrest
- A slide back 2nd row for more comfort
- Reclining seatbacks
- Easily accessible cup-holders
- Convenient seatback pockets
- Inwardly curved seatbacks of the front row increase legroom for 2nd row
- 60:40 split enables versatility in passenger and luggage combinations

3RD ROW SEATS

- Ample legroom
- Armrest
- Easy walk-in to 3rd row through fold-and-slide function of 2nd row seats
- Single-fold operation folds 3rd row seats fully flat to create a large luggage space

The LUV Triangle. Form, Function & Space create versatility

The Ertiga combines the compactness and manoeuvrability of a hatchback, the style and comfort of a sedan with the space and stature of an SUV. The interiors of the category creator are not just designed for style but to provide the ultimate in versatility with passenger and luggage combinations.



All seats upright: 7 people + luggage space

With all seats upright, 7 people can ride in spacious comfort, with enough room for shopping and other gear in the luggage box.



3rd row seats folded fully flat: 5 people + luggage space

Folding the 3rd row flat creates a large luggage space, while still accommodating 5 adults in comfort.

2 x 2nd row seats + 3rd row seats folded fully flat: 3/4 people + luggage space

Folding the 3rd row seats flat and either of the 60:40 split 2nd row seats expands carrying capacity even further, while still easily accommodating 3-4 adults.



Walk-in mechanism

The 2nd row seatback folds down and the seat slides forward to provide an easy walk-in to the 3rd row.

Versatile carrying capacity



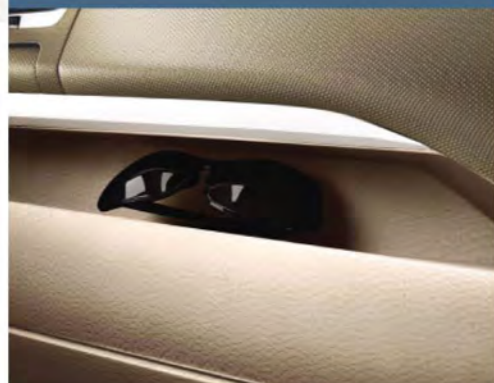
LUV is to have enough space

LUV is about having your own comfort zone. Therefore, the interiors of the Ertiga ensure that when it comes to convenience, you have more than enough handy storage spaces. These include space for easy access to items that are to be kept close at hand while driving such as sunglasses, drinks and maps, as well as covered storage for valuables.

GLOVE BOX



DASHBOARD RACK



DASHBOARD CUP HOLDER



FRONT AND REAR DOOR POCKETS



FRONT PASSENGER SEATBACK POCKET



LUGGAGE BOX



K14 VVT Petrol Engine: Light, compact and efficient



The advanced new VVT (Variable Valve Timing) engine is a light and fuel-efficient 1.4-litre petrol powered engine. It incorporates VVT which optimises intake-valve timing, to refine power delivery and boost fuel efficiency. This is further enhanced by paying special attention to reducing friction in engine components, for smoother running and reduced engine noise.

D13A DDiS Super turbo diesel engine: Superb performance



The DDiS is a 1.3-litre diesel engine that generates high power and excellent torque. The combination of common rail fuel injection with an inter-cooled turbocharger generates high dynamic torque for excellent acceleration and all-round performance, together with outstanding fuel efficiency, making it one of the most trusted diesel engines in the world.

Best in class mileage*

PETROL
16.02*
Kmpl

DIESEL
20.77*
Kmpl

*Test results of rule 115 of CMVR

Better manoeuvrability for enhanced performance



5.2m

- 5.2 meters compact turning radius
- 15-inch wheels for superior stability
- Tilt steering for driving comfort
- Rear wiper for enhanced visibility
- Higher seating enables better all-around visibility
- High ground clearance for better all-terrain driving

LUV is an endless journey

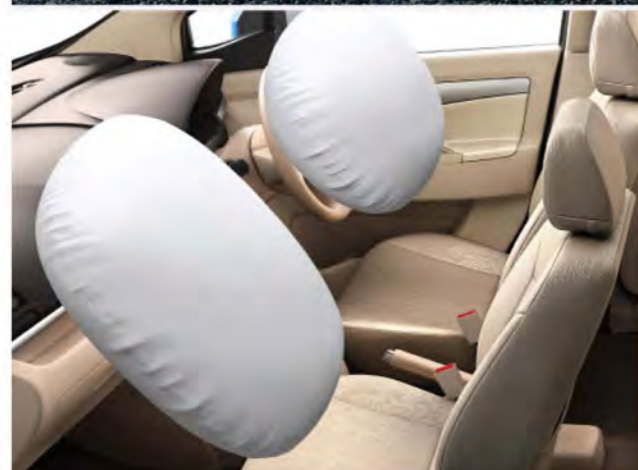
Once you are on the go in the Ertiga, the responsiveness of the engine will ensure that you never want the journey to end. At the heart of the exciting driving performance of the category forerunner are two meticulously refined engines that deliver lively power with outstanding fuel efficiency and reduced emissions.





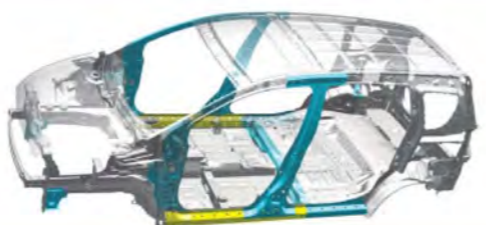
LUV shields LUV protects

Because peace of mind underpins driving enjoyment, the Ertiga comes integrated with a wide range of features that ensure the safety of all occupants.



SRS Airbags
To help protect the driver and front passenger in an emergency, the Ertiga is equipped with Supplemental Restraint System (SRS) dual front seat airbags that help cushion the impact and reduce the chances of injury.

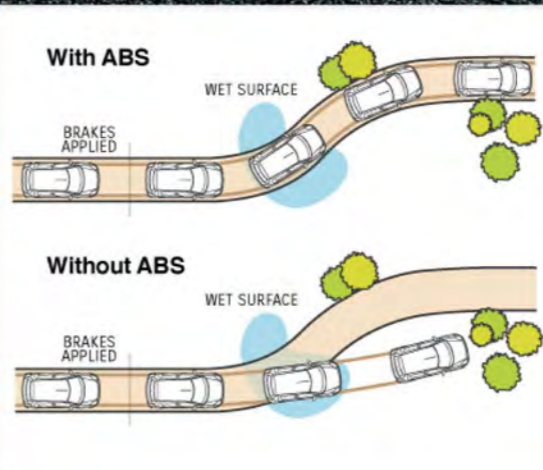
Optimised strength and weight



The use of higher tensile steel for strategic sections of the body structure and carefully positioned reinforcements provides excellent rigidity and strength, and helps reduce overall body weight without compromising on safety.



3-point ELR seatbelts
For occupant protection, 6 of the seats are equipped with 3-point ELR seatbelts, and the centre seat in the 2nd row is fitted with a 2-point lap belt. In addition, the seatbelts on the front seats are fitted with pretensioners and force limiters.



ABS with EBD for controlled braking
ABS (Antilock Brake System) prevents the wheels from locking up during sudden braking, and EBD (Electronic Brake force Distribution) uses the ABS to optimise distribution of braking force to the front/rear and left/right wheels in response to vehicle load and driving conditions, to optimise braking performance.



The shades of LUV



LUV

Serene Blue



LUV

Ecru Beige



LUV

Firebrick Red



LUV

Granite Grey



LUV

Silky Silver



LUV

Superior White

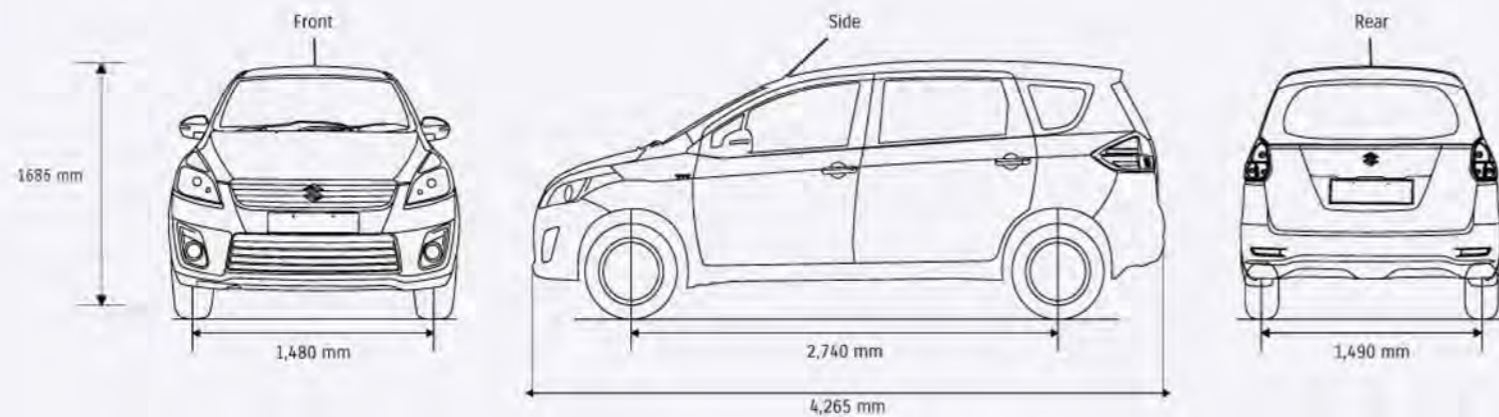


LUV

Dusky Brown

Colour may vary from actual body colour due to printing on paper.

SPECIFICATION		
Dimensions in mm		
Overall length	4,265	
Overall width	1,695	
Overall height	1,685	
Wheel base	2,740	
Front track	1,480	
Rear track	1,490	
Ground clearance	185	
Turning radius (m)	5.2	
Engine		
	Petrol	Diesel
Type	K-Series Petrol Engine with VVT	DDiS Diesel Engine
Displacement (cc)	1373	1248
Number of cylinders	4	4
Number of valves	16	16
Fuel distribution	Multipoint Injection	CRDI (Common Rail Direct Injection)
Bore (mm) x Stroke (mm)	73 x 82	69.6 x 82
Maximum power (PS@rpm)	95@6000	90@4000
Maximum torque (Nm@rpm)	130@4000	200@1750
Emission	BSIV OBD-2	BSIV OBD-2
Transmission		
Type	5MT	5MT
Weight		
Gross vehicle weight (Kg)	1760	1845
Steering		
Steering type	Rack and Pinion	
Power steering type	EPS & Tilt	
Brakes		
Front	Disc	
Rear	Drum	
Suspension		
Front	MacPherson Strut	
Rear	Torsion Beam	
Tyre size		
Steel (L&V Grade)	185/65R15	
Alloy (Z Grade)	185/65R15	
Capacity		
Fuel tank capacity (L)	45	
Seating capacity	7	



The drawings show general specifications of the vehicle.

FEATURES				
	Description	LXi/LDi	VXi/VDi	ZXi/ZDi
Safety & Security				
Driver and passenger airbag		-	-	√
ABS with Brake Assist & EBD	Petrol	-	○	√
	Diesel	√	√	√
Front seat belt	3-point ELR (Dr+CoDr)	√	√	√
	Pre-tensioner & Force limiter (Dr + Co-Dr)	-	-	√
2nd row seat belt	3-point ELR seat belts x2 (side)	√	√	√
	With centre 2-point lap belt	√	√	√
3rd row seat belt	3-point ELR seat belts x2	√	√	√
Security Alarm System	Door + Hood Sensing	-	√	√
Immobilizer		√	√	√
Instrument Panel & Console				
Tachometer		-	√	√
Information display integrated into meter cluster	Digital clock	√	√	√
	Outside temperature gauge	-	-	√
	Fuel consumption gauge (instantaneous/average)	√	√	√
	Driving range	√	√	√
Seat belt reminder (driver's seat)	Lamp	√	√	√
Door ajar reminder	Lamp	√	√	√
Light-on and key-on reminder	With buzzer	√	√	√
Low fuel warning	Lamp	√	√	√
Accessory socket	DC-12V	√	√	√
Retractable cup holder in I/P or dashboard	1Co-dr side	√	√	√
Cup holder in front console	1Cup holder	√	√	√
Steering				
Power steering		√	√	√
Tiltable steering wheel column		√	√	√
Steering wheel mounted audio controls		-	-	√
Seat				
Seat height adjuster	Driver Side	-	-	√
Front seat belt shoulder height adjuster	Dr + Co Dr	-	√	√
Seat back pocket	Dr + Co Dr	-	√(Only Co-Dr)	√
2nd and 3rd row head restraints		-	√	√
HVAC				
AC with heater		√	√	√
2 nd row A/C.		-	√	√
Audio				
FM/AM band antenna	Roof front	√	√	√
Radio + CD player + USB input		-	√	√
Speakers	(FRx2+RRx2=4)	-	√	√
Tweeters (2)		-	-	√
Doors				
Front door power window		-	√	√
Rear door power window		-	√	√
Driver's side power window with auto switch	Auto down only	-	√	√
Central door lock		-	√	√
Key-less entry		-	√	√
Inside chrome door handles		-	√	√
Body coloured door handles		-	√	√
Remote back door opener		√	-	-
Back door handle	Above license plate	-	√	√

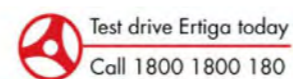
Description	LXi/LDi	VXi/VDi	ZXi/ZDi
Rear View Mirrors			
Day and night IRVM	-	√	√
Internally adjustable ORVMs	Manual	Electric	Electric
Body colored ORVMs	-	√	√
ORVM mounted side turn indicators	-	√	√
Interiors			
Front door trim pocket	√	√	√
Glove box	√	√	√
Folding assistant grip	Co-dr side+2nd row x 2 + 3 rd row x 2	√	√
Sun visor (2 nos)	(Driver + Co.Driver)	√	√
Passenger side vanity mirror (sun visor)	-	√	√
Ticket holder	(Driver's Side)	√	√
Remote fuel lid opener	√	√	√
Exterior			
Alloy wheels	-	-	√
Full Wheel Covers	-	√	-
Body coloured bumpers	√	√	√
Mud flaps (Fr and Rr)	Body colored	√	√
Lighting			
Front fog lamps	-	√	√
Rear fog lamp	-	√	√
High mounted stop lamp	√	√	√
Room Lamp	2 no.s	√	√
Windshield			
Green tinted glass	√	√	√
Rear window defogger	-	-	√
Front intermittent wipers+washer	√	√	√
Rear wiper+washer	-	-	√

√: Standard; - : Not available; O: Optional
Standard and optional equipment availability may vary.

Maruti Suzuki India Limited reserves the right to change without notice prices, colours, equipment specifications and models and also to discontinue models. Accessories features shown in the pictures may not be part of the standard equipment and will differ according to the variant. For variant-specific features refer to equipment list. Colours shown may vary from actual body colours due to printing on paper.

1,068 sales outlets, 3,051 service centres, over 23,661 trained sales personnel, 1,441 cities covered as on 1st March, 2012.

MARUTI SUZUKI INDIA LIMITED : Plot No.1 Nelson Mandela Road, Vasant Kunj, New Delhi-110070, India



www.marutisuzukiertiga.com